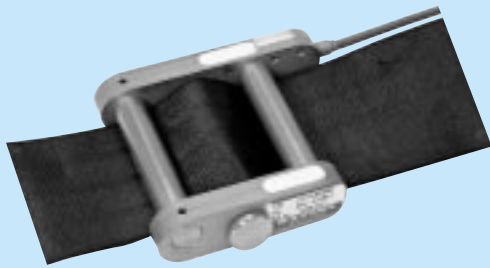
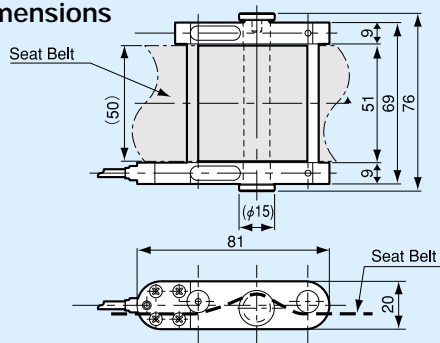


LBT-A-20KNS1 Seat Belt Tension Transducer



Using a strain gage, the LBT-S-20KNS1 detects the impact-initiated tension applied through the dummy to the seat belt. The aluminum alloy frame makes it compact and lightweight.

Dimensions



Specifications

Performance

Rated Capacity: 20 kN
 Nonlinearity: Within $\pm 2\%$ RO
 Rated Output: Approx. 2.5 mV/V (5000 $\mu\text{m/m}$)

Environmental Characteristics

Safe Temperature Range: 0 to 60°C
 Compensated Temperature Range: 10 to 50°C
 Temperature Effect on Zero: Within $\pm 0.1\%$ RO/°C
 Temperature Effect on Output: Within $\pm 0.1\%$ /°C

Electrical Characteristics

Safe Excitation Voltage: 10 VAC or DC
 Recommended Excitation Voltage: 1 to 5 VAC or DC
 Input Resistance: 350 $\Omega \pm 2\%$
 Output Resistance: 350 $\Omega \pm 2\%$

Cable: 4-conductor (0.08 mm²) heat-resistant vinyl shielded cable, 3.2 mm diameter by 7 m long, terminated with R05-PB5M connector plug (Shield wire is not connected to the chassis.)

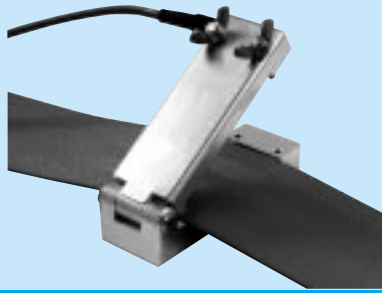
Mechanical Properties

Safe Overload Rating: 100%
 Enclosure: Metallic finish
 Weight: Approx. 130 g (excluding cable and connector)
 Others: Calibrated for single belt (KYOWA standard seat belt)
 Not waterproofed

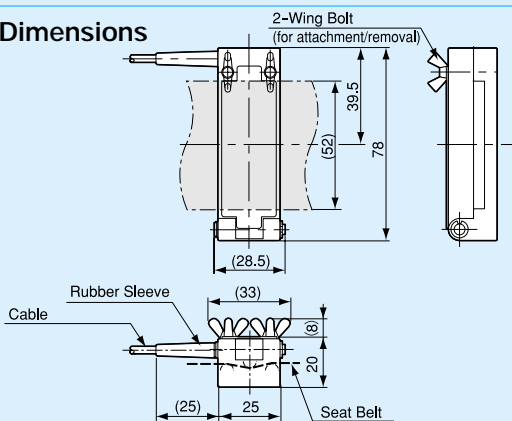
- Characteristic values are as measured by KYOWA calibration method and conditions.
- Model with a rated capacity of 10 kN for single belt or calibration with a supplied seat belt can also be offered.

LBT-B-200NSA1 Child Seat Belt Tension Transducers

Designed to measure the belt tension to fix the child seat, the LBT-B-200NSA1 is compact, lightweight and designed to be easily attached to, or removed from the belt.



Dimensions



Specifications

Performance

Rated Capacity: 200 N
 Nonlinearity: Within $\pm 3\%$ RO
 Rated Output: Approx. 0.75 mV/V

Environmental Characteristics

Safe Temperature Range: 0 to 60°C
 Compensated Temperature Range: 10 to 50°C
 Temperature Effect on Zero: Within $\pm 0.1\%$ RO/°C
 Temperature Effect on Output: Within $\pm 0.1\%$ /°C

Electrical Characteristics

Safe Excitation Voltage: 10 VAC or DC
 Recommended Excitation Voltage: 1 to 5 VAC or DC
 Input Resistance: 120 $\Omega \pm 10\%$
 Output Resistance: 120 $\Omega \pm 10\%$

Insulation Resistance: 500 Ω or more (with 250 VDC applied)
 Cable: 4-conductor (0.08 mm²) heat-resistant vinyl shielded cable, 3.2 mm diameter by 5 m long, terminated with R05-PB5M connector plug (Shield wire is not connected to the chassis.)

Mechanical Properties

Safe Overload Rating: 100%
 Enclosure: Metallic finish
 Weight: Approx. 90 g (excluding cable and connector)
 Material: Aluminum alloy
 Others: Not waterproofed.
 Calibrated for single seat belt (KYOWA standard seat belt)

- Characteristic values are as measured by KYOWA calibration method and conditions.
- Calibration with a supplied seat belt can also be offered.
- The transducer can be used for single seat belt only.