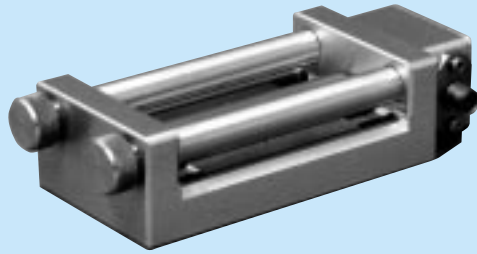


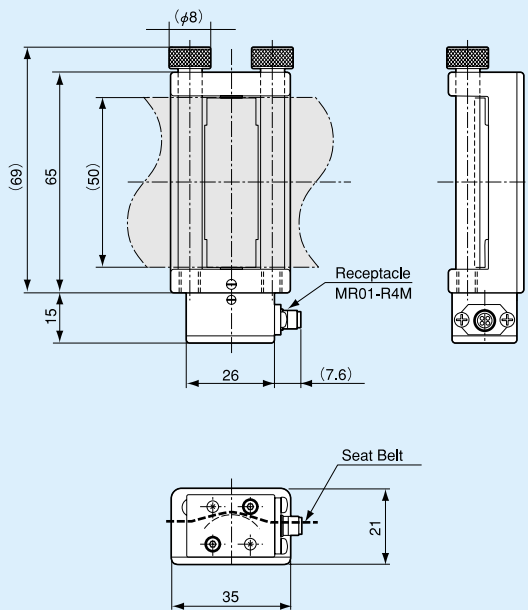
LBT-C-15KNSA1

Seat Belt Tension Transducer



While designed to be smaller in size and lighter in weight than the forerunner, the LBT-C-15KNSA1 provides a built-in output correction circuit for improved linearity.

Dimensions



Specifications

Performance

Rated Capacity: 15 kN

Nonlinearity: $\pm 1\%$ RO (with built-in output correction circuit)

Rated Output: Approx. 1.5 mV/V

Environmental Characteristics

Safe Temperature Range: 0 to 60°C

Compensated Temperature Range: 10 to 50°C

Temperature Effect on Zero: Within $\pm 0.1\%$ RO/°C

Temperature Effect on Output: Within $\pm 0.1\%$ /°C

Electrical Characteristics

Safe Excitation Voltage: 10 VDC

Recommended Excitation Voltage: 2 to 10 VDC

Input Resistance: 350 to 550 Ω

Output Resistance: 350 $\Omega \pm 5\%$

Insulation Resistance: 500 M Ω or more (with 25 VDC applied)

Cable: 4-conductor (0.05 mm²) heat-resistant vinyl shielded cable, 2.5 mm diameter by 7 m long, terminated with connector plug at both ends (Tajimi MR01-P4F to transducer side and Tajimi R05-PB5M to amplifier side)
(Shield wire is not connected to the chassis.)

Mechanical Properties

Safe Overload Rating: 120%

Enclosure: Aluminum alloy

Weight: Approx. 100 g

Remarks:

- Since the transducer has a built-in output correction circuit, the excitation voltage should be in a range of 2 to 10 V. (Use with less than 2 V voids the specified characteristics.)
- The Test Data Sheet describes calibration results with excitation voltage of 2 V.
- The cable can be turned in 180°.
- The transducer structure is not waterproofed.
- Calibration is made for single seat belt (KYOWA standard seat belt).
- Calibration with a supplied belt can also be offered.
- Cable-integrated type can also be manufactured.
- Characteristic values are as measured by KYOWA calibration method and conditions.
- The transducer can be used for single seat belt only.