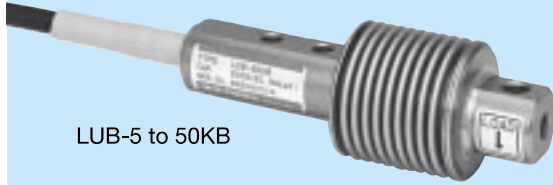


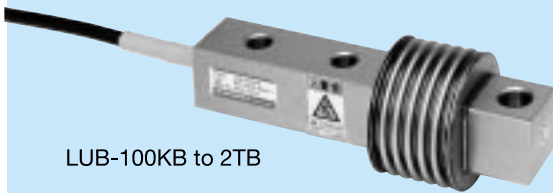
LUB-B

Beam-Type Load Cells

● Accuracy: 1/3333 (50 to 500 N) ● 50 N to 20 kN



LUB-5 to 50KB



LUB-100KB to 2TB

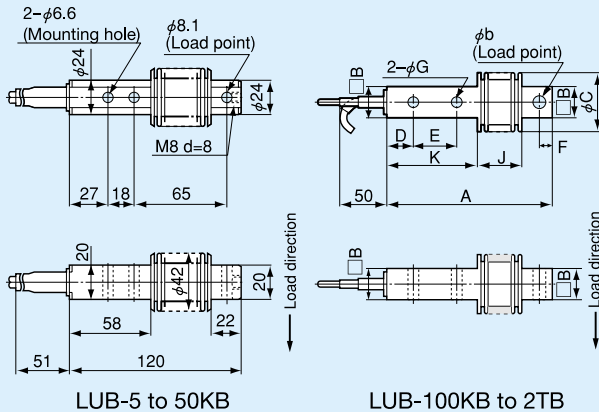
- TEDS-installed versions can be manufactured. Inquiries are welcome.

LUB-5KB to 50KB feature an accuracy of 1/3333 and LUB-100KB to 2TB feature corrosion-resistant stainless steel body and bellows. As load detectors, they enable configuration of accurate and stable weighing systems for conveyors and tanks.

Features

- Compact and lightweight
- Metal bellows
- Accuracy: 1/3333 & Special steel body (LUB-5KB to 50KB)
- Corrosion-resistant (LUB-100KB to 2TB)

Dimensions



LUB-5 to 50KB

LUB-100KB to 2TB

Specifications

Performance

Rated Capacity: See table below.

Nonlinearity:

- Within $\pm 0.03\%$ RO (LUB-B-5KB to 50KB)
- Within $\pm 0.05\%$ RO (LUB-B-100KB to 2TB)

Hysteresis:

- Within $\pm 0.03\%$ RO (LUB-B-5KB to 50KB)
- Within $\pm 0.05\%$ RO (LUB-B-100KB to 2TB)

Repeatability: 0.03% RO or less

Rated Output: 2 mV/V (4000 $\mu\text{m/m}$) $\pm 0.3\%$

Environmental Characteristics

Safe Temperature Range: -20 to 70°C

Compensated Temperature Range: -10 to 60°C

Temperature Effect on Zero Balance: Within $\pm 0.003\%$ RO/ $^\circ\text{C}$

Temperature Effect on Output: Within $\pm 0.003\%$ / $^\circ\text{C}$

Electrical Characteristics

Safe Excitation Voltage: 20 VAC or DC

Recommended Excitation Voltage: 1 to 12 VAC or DC

Input Resistance:

- 435 Ω $\pm 60 \Omega$ (LUB-B-5KB to 50KB)
- 400 Ω $\pm 50 \Omega$ (LUB-B-100KB to 2TB)

Output Resistance: 350 Ω $\pm 2 \Omega$

Cable: 4-conductor (0.3 mm²) chloroprene shielded cable, 7.6 mm diameter by 3 m long (5 m long with LUB-B-100KB to 2TB), bared at the tip (Shield wire is not connected to mainframe.)

Mechanical Properties

Safe Overload Rating: 150%

Natural Frequency: See table below.

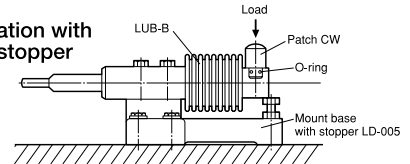
Weight: See table below.

Protection Rating: IP67

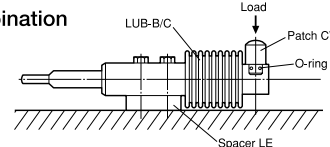
(Watertight type conforming to JIS C 0920)

In Combination with Special Accessories

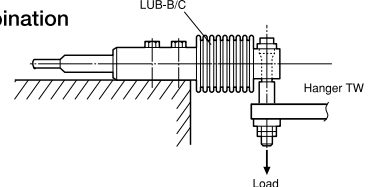
- LUB-B in combination with mount base with stopper



- LUB-B/C in combination with spacer



- LUB-B/C in combination with hanger



Model	Rated Capacity	Natural Frequency (Approx.)	A	B	ϕ C	D	E	F	ϕ G	ϕ H	J	K	Weight (Approx.)	Patch	Mount Base w/ Stopper	Spacer	Hanger	
LUB-5KB	50 N	250 Hz	See dimensional drawing above.											530 g	CW-005	LD-005	LE-005	TW-002 (for 5 to 20KB)
LUB-10KB	100 N	350 Hz																
LUB-20KB	200 N	500 Hz																
LUB-30KB	300 N	650 Hz																
LUB-50KB	500 N	800 Hz																TW-005 (for 5 to 50KB)
LUB-100KB	1 kN	1.8 kHz	120	20	42	25	20	10	8.4	10.1	36	60	800 g	CW-02	—	LE-02	TW-02	
LUB-200KB	2 kN	1.9 kHz																
LUB-500KB	5 kN	1.1 kHz	190	35	67	30	50	15	13	16.1	45	110	1.9 kg	CW-1	—	LE-1	TW-1	
LUB-1TB	10 kN	1.2 kHz																
LUB-2TB	20 kN	1.1 kHz	220	44	84	30	60	20	17	20.2	54	124	3.2 kg	CW-2	—	LE-2	TW-2	