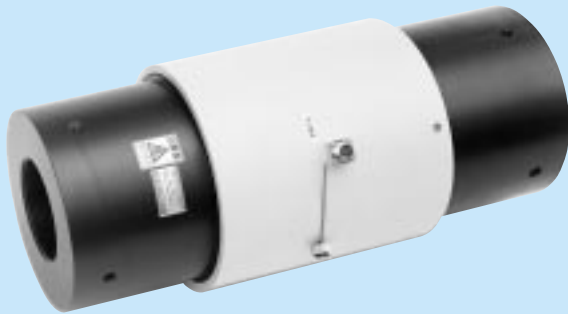


LUR-B-SA1

Jack Load Cells

● For Measurement of Loads Applied to Jacks ● 10 kN to 5 MN



LUR-B-SA1 series load cells are designed to measure loads applied to jacks when lifting up or moving a large machinery or structure in civil engineering and construction fields, etc. Placed in between, these load cells enable the operators to prevent overloads, unbalanced loads or movement of the center of gravity.

Features

- Special design for jacks
- Low price
- Various capacity ranges

Specifications

Performance

Rated Capacity: See table below.

Nonlinearity:

Within $\pm 0.2\%$ RO (LUR-B-10 to 200KNSA1)

Within $\pm 0.5\%$ RO (LUR-B-300KNSA1 to 5MNSA1)

Hysteresis:

Within $\pm 0.1\%$ RO (LUR-B-10 to 200KNSA1)

Within $\pm 0.5\%$ RO (LUR-B-300KNSA1 to 5MNSA1)

Rated Output: ± 1 mV/V (± 2000 $\mu\text{m/m}$) $\pm 1\%$

Environmental Characteristics

Safe Temperature Range: -10 to 60°C

Compensated Temperature Range: 0 to 60°C

Temperature Effect on Zero Balance: Within $\pm 0.01\%$ RO/ $^\circ\text{C}$

Temperature Effect on Output: Within $\pm 0.01\%$ / $^\circ\text{C}$

Electrical Characteristics

Safe Excitation Voltage: 15 VAC or DC

Recommended Excitation Voltage: 1 to 12 VAC or DC

Input Resistance: $350 \Omega \pm 2\%$

Output Resistance: $350 \Omega \pm 2\%$

Cable: 4-conductor (0.3 mm^2) chloroprene shielded cable, 7.6 mm diameter by 10 m long, terminated with connector plug

Mechanical Properties

Safe Overload Rating: 200%

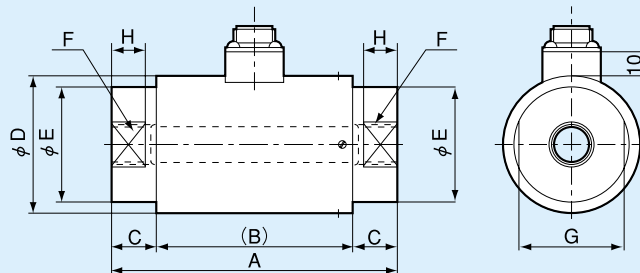
Weight: See table below.

With the capacity of 200 kN or more, calibration is performed for compression load only.

2

TRANSUCERS

Dimensions



Model	Rated Capacity	A	(B)	C	ϕD	ϕE	F	G	H	Weight (Approx.)
LUR-B-10KNSA1	± 10 kN	100	70	15	55	25	M12 P=1.75 d=15	20	10	1.4 kg
LUR-B-20KNSA1	± 20 kN	110	70	20	60	50	M18 P=1.5 d=20	46	15	2.1 kg
LUR-B-30KNSA1	± 30 kN	125	85	20	60	50	M24 P=2 d=30	46	15	2.2 kg
LUR-B-50KNSA1	± 50 kN									
LUR-B-100KNSA1	± 100 kN	175	105	35	65	55	M39 P=2 d=45	50	25	2.5 kg
LUR-B-200KNSA1	± 200 kN	255	125	65	80	70	M50 P=2 d=65	65	40	5.2 kg
LUR-B-300KNSA1	± 300 kN	255	125	65	100	90	M65 P=3 d=65	—	—	8 kg
LUR-B-500KNSA1	± 500 kN	330	170	80	130	120	M85 P=3 d=85	—	—	15 kg
LUR-B-1MNSA1	± 1 MN	430	210	110	188	158	M110 P=3 d=118	—	—	55 kg
LUR-B-1.5MNSA1	± 1.5 MN	530	250	140	220	200	M140 P=4 d=140	—	—	85 kg
LUR-B-2MNSA1	± 2 MN	590	270	160	260	228	M160 P=4 d=170	—	—	100 kg
LUR-B-3MNSA1	± 3 MN	700	360	170	300	270	M190 P=4 d=190	—	—	170 kg
LUR-B-5MNSA1	± 5 MN	900	450	225	370	350	M240 P=6 d=250	—	—	300 kg