

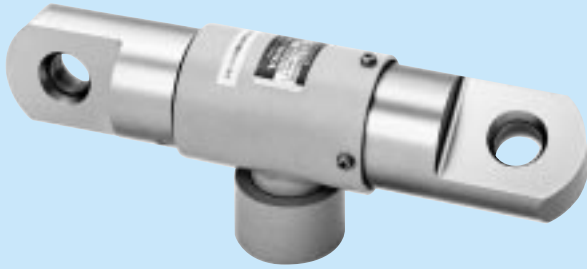
# LTR-S-SA1

## One-End Revolving Tension Load Cells

● For Measurement of Drawbar Pull and Rope Tension ● 20 to 50 kN

2

TRANSDUCERS



LTR-S-SA1 series load cells are suitable for measurement of tensile force of rope. Since the hook at one end revolves together with the rope which may revolve due to twisting, easy installation and handling are ensured.

### Features

- Compact
- Lightweight
- Low price
- For load distribution measurement

### Specifications

#### Performance

Rated Capacity: See table below.  
 Nonlinearity: Within  $\pm 0.5\%$  RO  
 Hysteresis: Within  $\pm 0.5\%$  RO  
 Rated Output: Approx. 1 mV/V (2000  $\mu\text{m/m}$ )

#### Environmental Characteristics

Safe Temperature Range:  $-20$  to  $70^\circ\text{C}$   
 Compensated Temperature Range:  $-10$  to  $60^\circ\text{C}$   
 Temperature Effect on Zero Balance: Within  $\pm 0.05\%$  RO/ $^\circ\text{C}$   
 Temperature Effect on Output: Within  $\pm 0.05\%$ / $^\circ\text{C}$

#### Electrical Characteristics

Safe Excitation Voltage: 12 VAC or DC  
 Recommended Excitation Voltage: 1 to 5 VAC or DC  
 Input Resistance:  $350 \Omega \pm 2\%$   
 Output Resistance:  $350 \Omega \pm 2\%$

Cable: 4-conductor (0.3 mm<sup>2</sup>) chloroprene shielded cable, 7.6 mm diameter by 5 m long, terminated with connector plug (Shield wire is not connected to mainframe.)

#### Mechanical Properties

Safe Overload Rating: 150%  
 Static Breaking Overload Rating: 200% (150% with 50KNSA1)  
 Weight: Approx. 3.6 kg

Model	Rated Capacity	$\phi A$	$\phi B$
LTR-S-20KNSA1	20 kN	20	26
LTR-S-30KNSA1	30 kN		
LTR-S-50KNSA1	50 kN	22	29

### To Ensure Safe Usage

- When loaded, sliding friction prevents the revolving part from revolving.
- Do not use for measurement of hanging load.

### Dimensions

