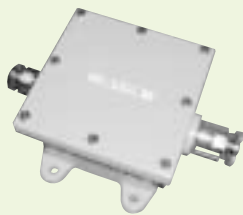


# Auxiliary Devices for Sure Operation

## Junction Box SJB-1CSA

The junction box SJB-1CSA is designed to connect the load cell to a distant amplifier via a shielded extension cable consisting of 4 conductors (0.75mm<sup>2</sup>) or 6 conductors (1.25mm<sup>2</sup>).

The JBS-1CSA is also available for use in explosive environments.



## Weighing Checker WDS-100DS

The WDS-100DS is a simple handy instrument to check operation of the strain-gage load cell and the amplifier with which the load cell connects. It can measure strain output and check insulation resistance as well as generating dummy strain. Thus, simple inspection of the strain gage-based measuring system is possible using this handy unit only.



### Applications

- Measurement of load cell output
- Measurement of input/output resistance of load cell
- Inspection of insulation resistance of load cell
- Inspection of amplifier operation by generating dummy strain
- Continuity test for contact output, etc. with continuity buzzer

### Specifications

Inspection Subjects: Strain gage-based measuring systems

Strain Measurement

Applicable Load Cells: 60-350Ω strain-gage load cells (4-gage method)

Measuring Range: ±1999 x10<sup>-6</sup> strain (x1 range)  
±19990 x10<sup>-6</sup> strain (x10 range)

Measurement of Input/Output Resistance

Measuring Range: 0 to 1999Ω

Insulation Resistance Check

Indication: 4 approximate levels of <1MΩ, 1MΩ, 10MΩ and >10MΩ

Applied Voltage: Approx. 25V

Continuity Test

Applied Voltage/Current: Approx. 3V/1mA

Indication: Buzzer

Strain Output

Output Strain Quantity: 0 to ±2000 x10<sup>-6</sup> strain (17 ranges)

Input/Output Resistance: Approx. 350Ω

Power Supply: 2 pieces of dry cell battery LR6

## Checkers SMD-10A/20A



### Specifications

Number of Measuring Channels: 1

Inspection Targets: Strain gages, strain-gage load cells, DC voltage, thermocouples

Measuring Range

Strain: 0 to ±199000 x10<sup>-6</sup> strain

DC Voltage: 0 to ±19.900V

Temperature (Thermocouple): K, T, E, J, N

Resistance: 0 to 19900Ω

Insulation Resistance: 1 to 500MΩ

Functions: Coefficient operation, automatic coefficient calculation, peak hold, interval measurement, storage

Power Supply: Built-in NiCd battery, continuous operating time of approx. 10 hours (AC adaptor included in standard accessories)

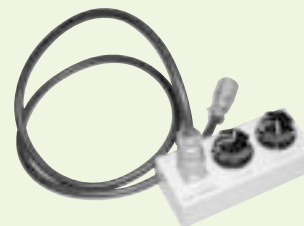
## Actual Load Calibrator

This device enables actual load calibration with the load cell mounted.



## Calibration Box CAB-350D

Connected in place of the load cell, the calibration box CAB-350D enables system check, span adjustment, etc.



Reliability through integration



KYOWA ELECTRONIC INSTRUMENTS CO., LTD.

Overseas Department:

1-22-14, Toranomon, Minato-ku, Tokyo 105-0001, Japan

Tel: (03) 3502-3553 Fax: (03) 3502-3678

http://www.kyowa-ei.co.jp e-mail: overseas@kyowa-ei.co.jp